

LED Fan Instruction Manual

Installing Your Software:

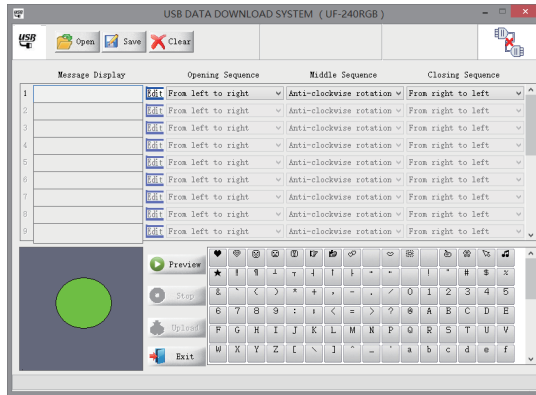
Insert the disc into your computer's disc drive.

When the "Autoplay" window pops up, select "Open folder to view files"

Copy the folder "LED Fan Editor" from the disc to your computer. (Any Folder)

Using Your Software:

Within the folder "LED Fan Editor", double click on "LedFan" to open the program.



Main Window

Main Window Button Functions:

Open:		Open saved message file
Save:		Save your message file
Clear:		Clear selected message box
Edit:		Opens editor window
Preview:		Activate preview window
Stop:		Stop preview
Upload:		Uploads message from PC to the LED Fan
Exit:		Exit the program

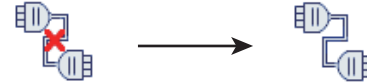
Connecting Your USB LED Fan:

First, make sure that the LED Fan is in "Edit" mode, this is selected via the switch at the back of the fan:



Back of Fan

Next, simply connect your fan to any USB port on your computer - The status icon (top right of main window) will change to indicate that the fan has been connected successfully:



Creating a Message:

Within the "Message Display" column, select the first blank message line. Enter your message by typing or via the "Character and Symbol Library".



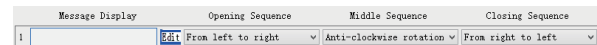
Character and Symbol Library

There is space for 20 messages. Each message has a character limit of 20 (including spaces)

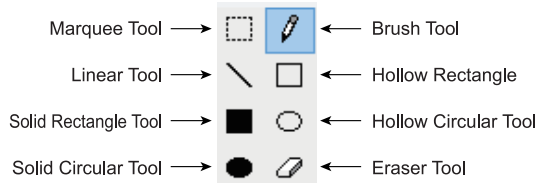
Message Sequence:

There are 3 sequence options which control how your messages are displayed on the LED Fan:

- The Opening Sequence menu selects how your messages initially appear.
- The Middle Sequence menu selects what your message does while being displayed e.g. "Flash 3 times"
- The Closing Sequence menu selects how your message closes.



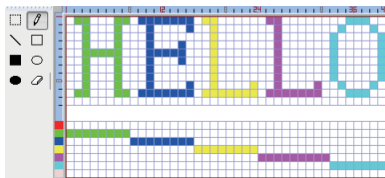
The Edit Window ()



Within the Edit Window, there are two separate sections. The top section is where you can edit the text manually, the bottom section is where you can edit the colour of the text.

Setting LED Colour:

The 7 colours available are represented by 7 lines: Red, Green, Blue, Yellow, Purple, Turquoise, and White.



Simply draw underneath the text you wish to colour. (See Above)
(If you do not set a colour for your text, the default setting switches between all 7 colours automatically).

Preview and Uploading LED Fan:

You can preview the text by clicking the "Preview" button in the main window. To end the preview click the "Stop" button.



Preview Window

To send your message to the LED Fan, click the "Upload" button – a green bar will appear at the bottom of the main window, showing the transfers progress. A Red LED will blink on the Fan indicating that the transfer is in progress.

If an error occurs, a window will pop up saying "Upload Failed". If this happens, please un-plug and re-insert USB into computer.

To save your text, click the "Save" button in the main window.

SAVING & OPENING THE FILES

To save your text - click the "Save" button in the main window after editing, change the name of your file without the "*" asterisk and click save.

To open the saved file - click the "Open" button in the main window, then select the data file to open. The saved file can then be uploaded into your message fan.

SYSTEM REQUIREMENTS:

This software is designed for Windows XP, 7 & 8 Operating systems.

This software is not currently compatible with Mac Operating systems.

USER SAFETY GUIDELINES:

- 1) Do not touch the blades or put fingers inside fan guard when fan is spinning.
- 2) Keep hair and loose materials away from the spinning fan blades.
- 3) Do not use near an open flame or water.
- 4) If the product suffers any damage, please stop using immediately.
- 5) Do not try and open the fan / manipulate any internal components. Doing so immediately voids warranty.
- 6) The fan should be directly connected to a USB Port on a PC/Laptop.
- 7) For safety, keep out of the reach of children under 3 years.



Imported by: Arnott's of Australia P/L
(Not The Biscuit Co.)
www.arnottsgadgetman.com
info@arnottsgadgetman.com